

CNC VISION MEASURING SYSTEMS



VMM-L600CN

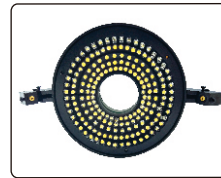


VMM-L1200CN

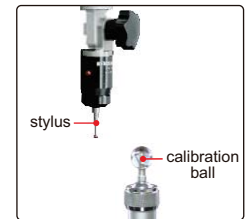
- Automatic edge-detection, focus, measuring, contour scanning, calibration, etc.
- Servo motors for X, Y, Z axis
- SPC function for large quantity measurement



lens with coaxial light (included)



programmable segmented ring light (included)



probe (optional), includes Ø2mm and Ø3mm styli, Ø25mm calibration ball, measuring accuracy is 10µm

SPECIFICATION

Code	VMM-L600CN	VMM-L601CN	VMM-L800CN	VMM-L1000CN	VMM-L1200CN
Measuring range(X×Y×Z)	600×600×150mm	600×900×150mm	800×1000×200mm	1000×1200×200mm	1200×1500×200mm
Glass stage size	640×770mm	640×1070mm	1208×885mm	1408×1085mm	1708×1285mm
Resolution of X/Y/Z axis	0.5µm				
Accuracy of X/Y axis	≤(3.5+L/200)µm(L is measuring length in mm)				
Repeatability of X/Y axis	2µm				
Objective	0.7X~4.5X (zoom)				
Working distance	92mm				
View field(diagonal length)	1.7~11.1mm				
Magnification	20X~128X (on 19.5" monitor)				
Camera	1/2" color CCD, 0.3M pixel				
Illumination	surface	coaxial light, programmable segmented ring light			
	contour	adjustable LED light			
Max. height of workpiece	150mm		200mm		
Max. weight of workpiece	30kg				
Operation system	Windows 7/8/10				
Drive method	automatic				
Guide rail	linear rail				
Power supply	100~240V, 50/60Hz				
Operation environment	temperature: 20±2°C, temperature variation: <1°C/h, <2°C/24h, <1°C/m; humidity: 55%~65%				
Dimension (L×W×H)	1500×1300×1510mm	1800×1300×1510mm	2170×2380×1560mm	2370×2580×1560mm	2570×2880×1560mm
Weight	1281kg	1500kg	3260kg	3750kg	4520kg

STANDARD DELIVERY

Main unit	1 pc
Video card with dongle	1 pc
Software disc	1 pc
Computer	1 pc
19.5" Display	1 pc
Lens with coaxial light	1 pc
Controller	1 pc
Calibration glass chart	1 pc
Laser positioner	1 pc
Clay	1 pc
Anti-dust cover	1 pc

OPTIONAL ACCESSORY

0.5X auxiliary objective	Code: ISD-V-OB05X Working distance: 175mm Magnification: 10~64X (on 19.5" monitor)
2X auxiliary objective	Code: ISD-V-OB2X Working distance: 36mm Magnification: 40~256X (on 19.5" monitor)
Probe	Code: ISD-V-PROBE Includes $\varnothing 2\text{mm}$ and $\varnothing 3\text{mm}$ styli, $\varnothing 25\text{mm}$ calibration ball
Office software	Code: 7313-OFFICE

SOFTWARE(INCLUDED)

